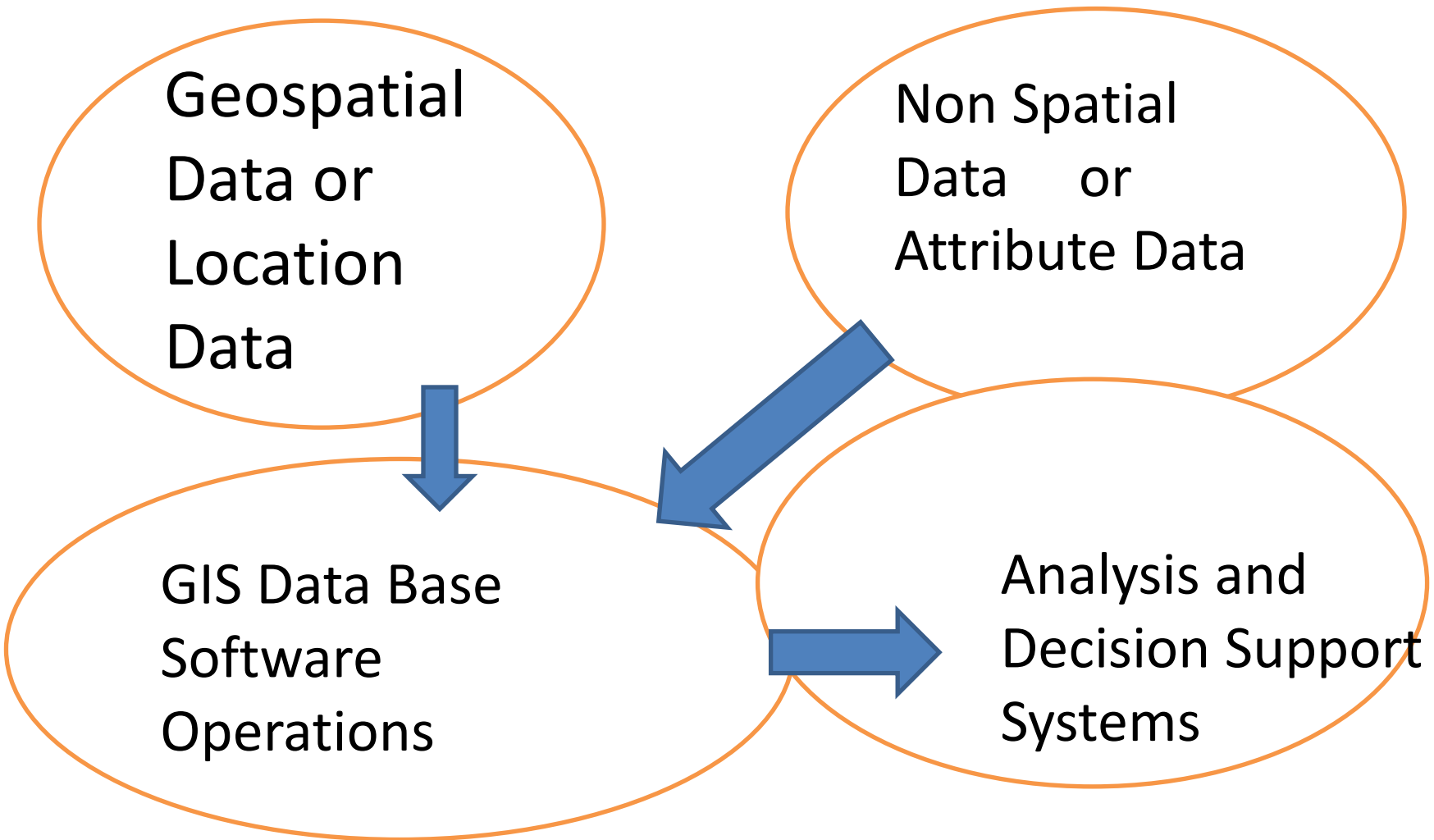


Geospatial Technology in India

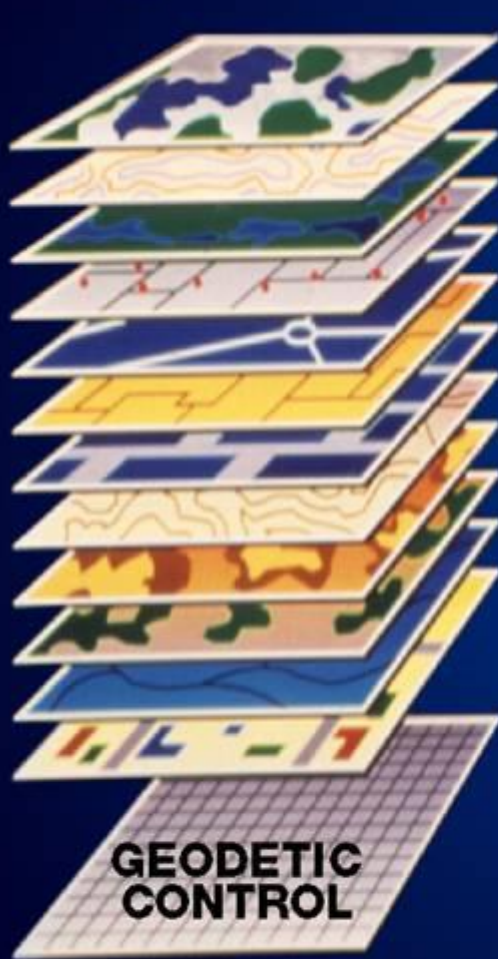
Dr. Swarna Subba Rao

Former Surveyor General of India

GIS –GEOGRAPHIC INFORMATION SYSTEM



Geographic Information Systems



Wards and Precincts
Demographics
Structures
Water Utilities
Sewerage
Electrical Utilities
Roads
Boundaries
Land Use
Hydrology
Soils
Topography



Development of Geospatial Technology

- Map ... Basic Infrastructural tool.
- Attribute data... for planning or designing a project.
- Integration of Spatial and non-spatial data.

Geospatial Data

- Sources.. Map
- Aerial platform .1940 to 1990 Air Photography. Photogrammetry.
- Satellite Imagery.
- Drone Photography

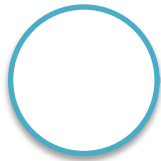


**LOCATION
FUNDAMENTAL
TO DECISION
MAKING**

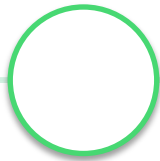


**MAPS ARE NOT JUST
DRIVING APPS TODAY;
THEY ARE DRIVING
ECONOMIES TOO**

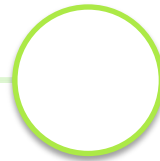
VALUE OF MAPS IN INDIAN ECONOMY



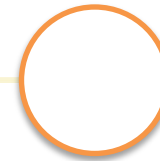
*In 2010, McKinsey Global Institute's report had highlighted that land market distortions in India lead to **1.3% loss in GDP** annually.*



*This amounts to **\$34.45 billion** each year at current values (Indian GDP is currently valued at \$2.65 trillion).*



*In other words, effective use of mapping & digital technologies in our land records management can **unlock \$34 bn.***



*This is almost **equal to FDI equity inflows into India** between April and Dec 2017, making it one of top FDI destinations in the world.*

CONTRIBUTION TO GLOBAL ECONOMY



\$1trn business sales facilitated by digital maps in 2016



\$550bn consumer benefits derived from map services



4 mn direct jobs generated by mapping services globally



5% improvement in revenues and cost savings by companies

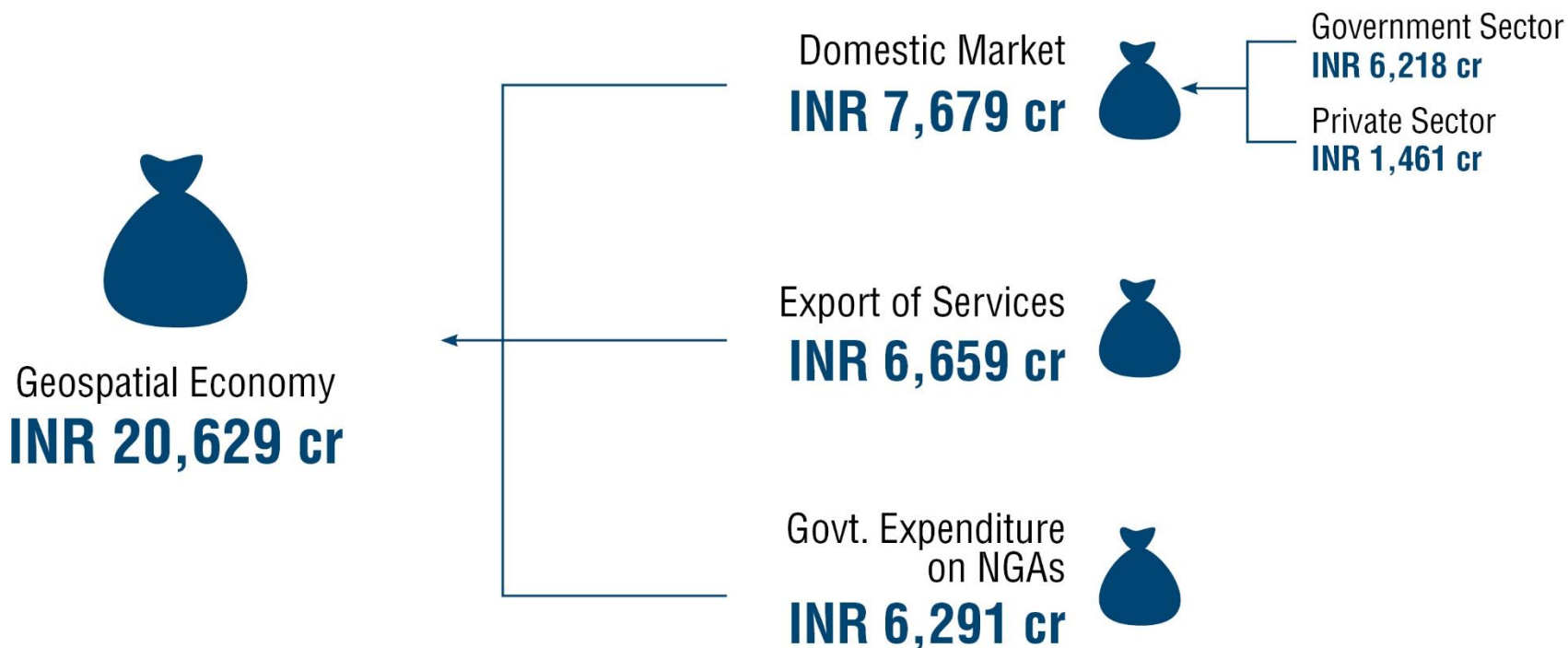


75% sectors representing global GDP directly benefitted



1,686 mn Mt reduction in vehicular emissions because of digital maps

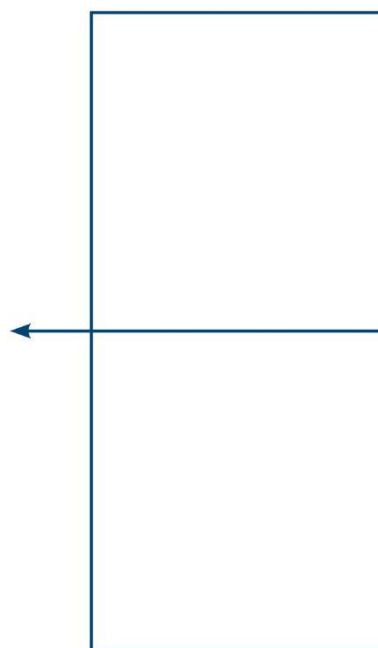
Estimated Value of Indian Geospatial Economy in 2017-18



Employment within Indian Geospatial Economy in 2017-18



Employment
2,51,300



Domestic Market
145,400



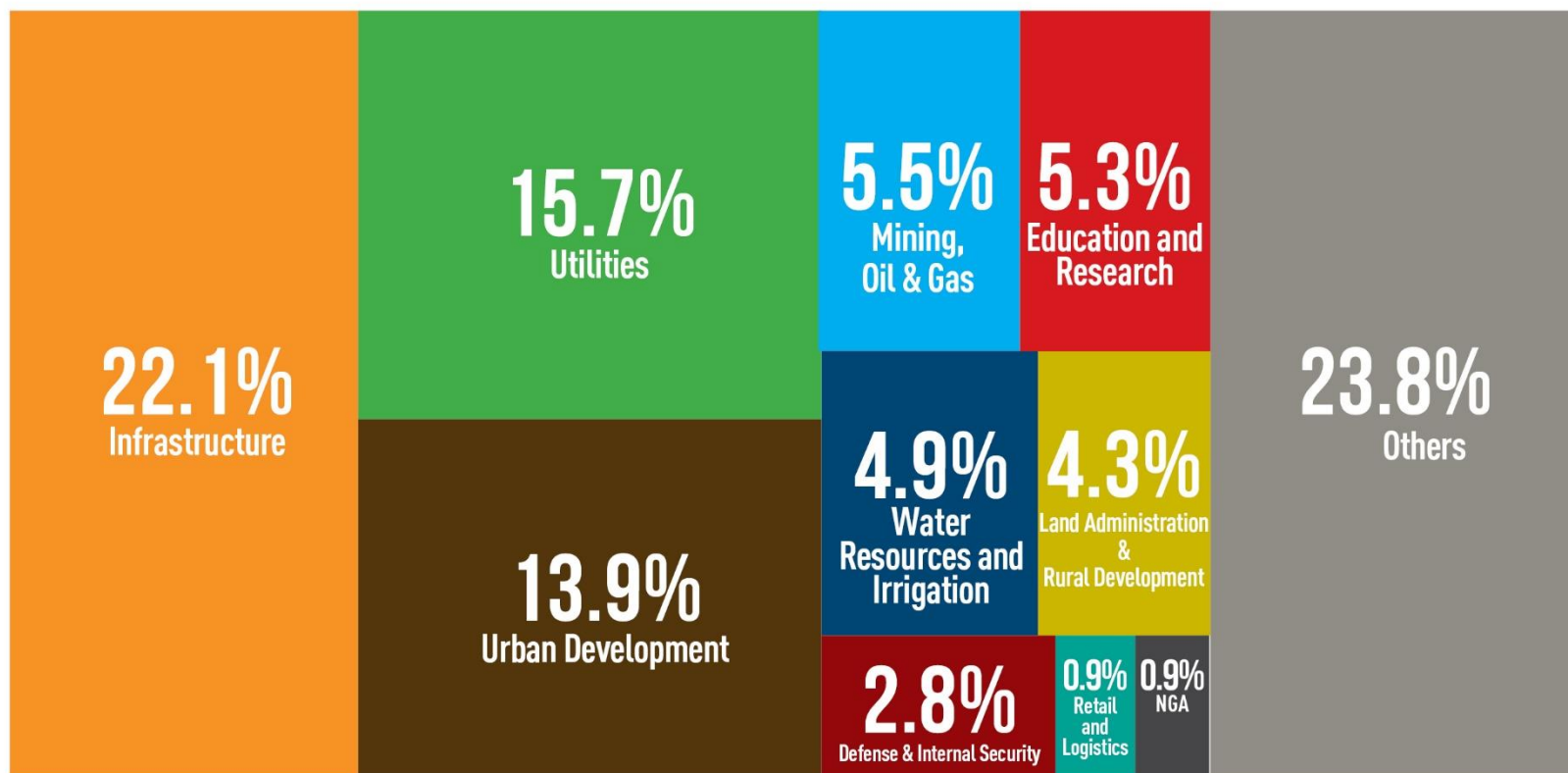
Export of Services
66,600



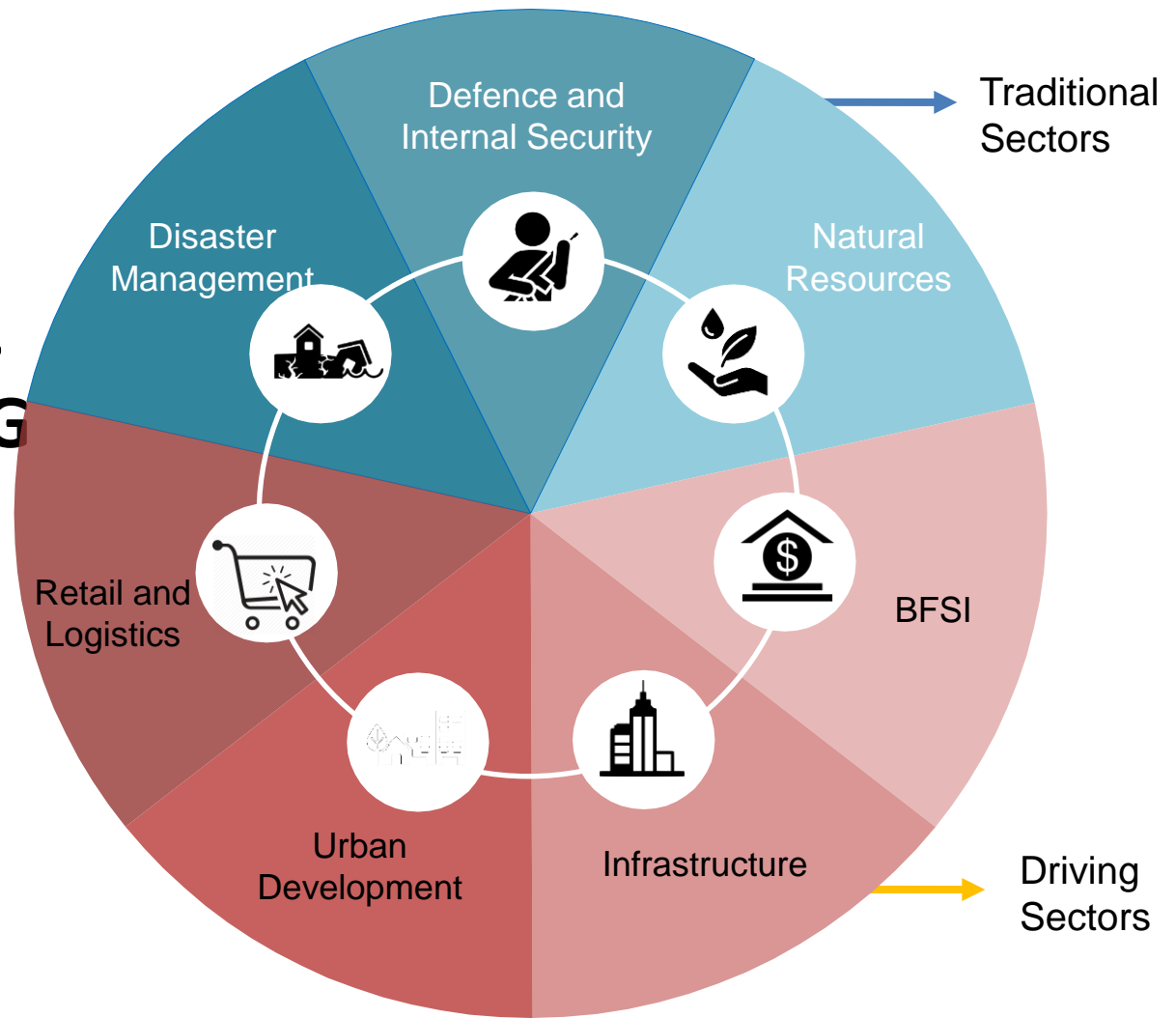
Government Services
39,300



Market Distribution as per Application Areas (FY 2017-18)



GEOSPATIAL DIVERSIFYING INTO NEW MARKETS



KEY TAKEAWAYS

01

Services segment the largest part of the Indian geospatial market with 74.4% mkt share in FY 2017-18

02

Sizeable part of Indian geo industry caters to overseas market, exporting a range of services

03

India imports almost all of its hardware requirement for surveying and special purpose measurement stations.

04

Land & survey segment alone is estimated to have more than 5,000 enterprises, employing nearly 2 lakh

05

Industry lacks a solution centric approach and is more inclined to sell software boxes/hardware

06

In EO sector, there is huge scope for commercialization for pvt industry in both upstream and downstream

SWOT ANALYSIS OF GEOSPATIAL INDUSTRY

Strenghts

- Presence of local as well as global technology leaders
- Globally acknowledged remote sensing programme
- Strong workforce catering to local and overseas services requirements

Weaknesses

- Absence of a robust geodetic infrastructure
- Strict controls on data access
- Missing domestic hardware manufacturing capacity

Opportunities

- Increased government focus on use of geospatial solutions
- High growth in internet-led consumer services
- Strong growth expected in value added services

Threats

- Heavy reliance on government project
- Delays in geodetic infrastucture update
- Inadequate planning and coordination

Scope of Applications of GIS

- GIS technology yields Decision Support Systems based on the data in the project.
- Can be applied effectively in any Engineering, Municipal or Revenue projects.
- In modernizing Cadastral Mapping and creating a National Land Data System. Less cases in courts.
- Integration with AI enhances it's power multifold.

Drones in GIS

- Best source of capturing Geospatial data of high resolution.
- Fastest.
- Scope for around 10 drone companies in Land Surveys.
- Can be used in Traffic Management, Agricultural Mapping, Hydrology and Disaster and crowd management.

Legal Issues

- Data Collection Policies.
 - a. Geospatial data b. Attribute data
- Field Survey Policies.
 - a. Restrictions on field surveys?
- Infrastructure related policies.

Control data. CORS, Map Restriction Policy, Air Photography Related Policies, Geospatial Data Policy

- Software related policies.
- Mobile and Internet Related issues.

THANK YOU

If any participant intends, he/she can send the query to
srswarna@gmail.com

Mobile and Whatsapp: 9963923480

Acknowledgement: I thankfully acknowledge that some of the slides
used here are from

Sh. Sanjay Kumar, CEO,

